

FOUND BRASS CAP PER SURVEY REC. BK. 8, P.6-11

43

S 00°25'17" E 2245.79'

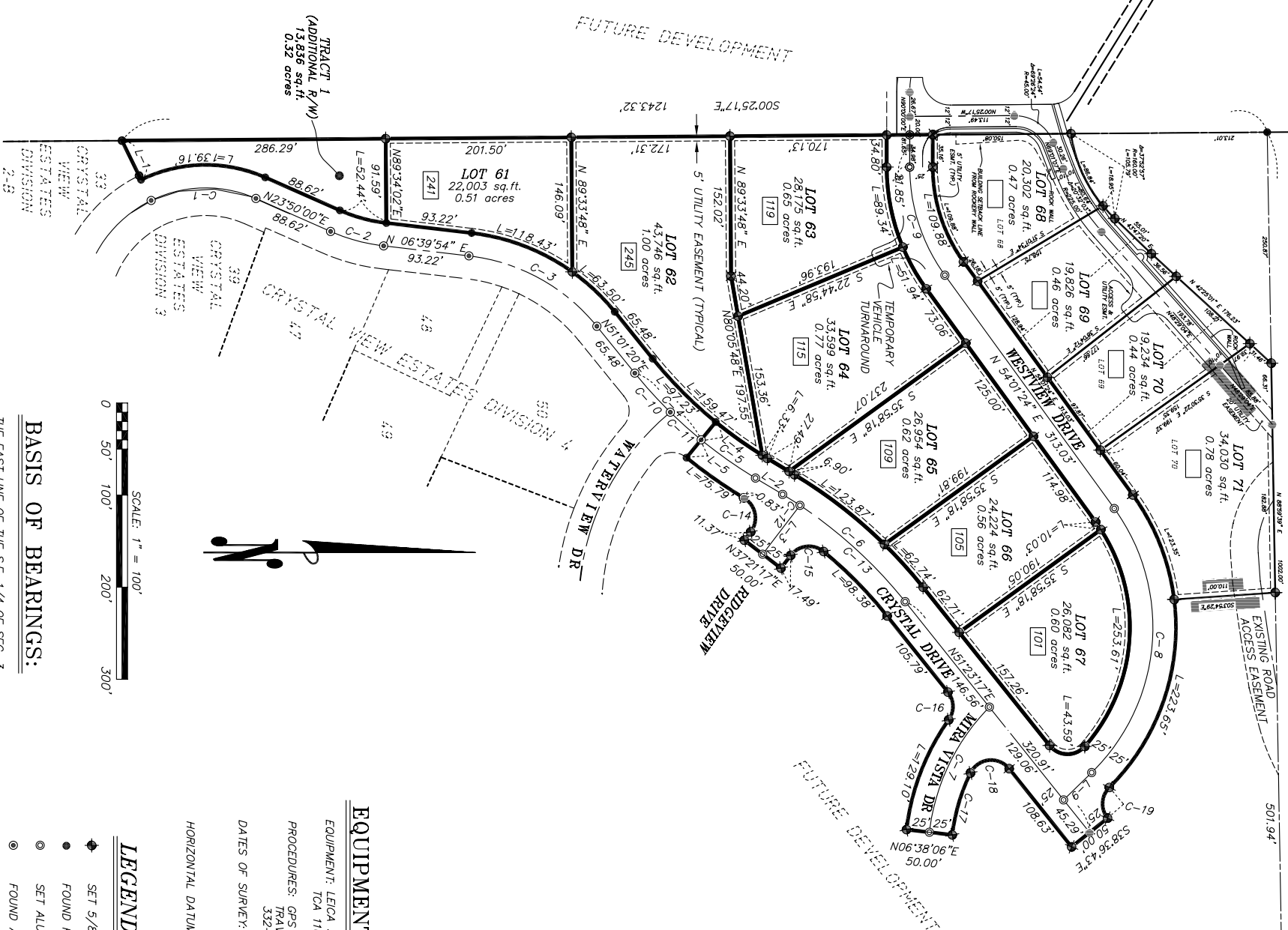
EXHIBIT OF
PLAT OF

CRYSTAL VIEW ESTATES

DIVISION 5

REVISED TO INCLUDE SHORT PLATTED LOTS

FOUND BRASS CAP (W.P.M.C.) IN 1991, PER SURVEY REC. BK. 8, P. 6-11. SUBSEQUENTLY DESTROYED DURING CONSTRUCTION AND REPLACED WITH A LEAD PLUG IN A CONCRETE RETAINING WALL.



SCALE: 1" = 100'

BASIS OF BEARINGS:

THE EAST LINE OF THE SE 1/4 OF SEC. 3 ACCORDING TO A SURVEY FILED IN BK. 8 OF PLATS, P. 6-11 RECORDS OF THE CHELAN COUNTY AUDITOR.
REFERENCE A SURVEY FILED IN BK. 26 OF SURVEYS, P. 64-64.1, RECORDS OF THE CHELAN COUNTY AUDITOR FOR FURTHER DETAILS CONCERNING THE SUBDIVISION OF SECTION 4 AND THE DERIVATION OF THE BASIS OF BEARINGS.

EQUIPMENT, PROCEDURES AND DATUM

EQUIPMENT: LEICA SR530 GEODETIC GPS RECEIVERS, WILD AT502 ANTENNAE AND TCA 1100L 3" THEODOLITE WITH E.D.M.I.
PROCEDURES: GPS SATELLITE OBSERVATION COMBINED WITH CONVENTIONAL TRAVERSE MEETING OR EXCEEDING STANDARDS AS SPECIFIED IN W.A.C. 332-130-090.
DATES OF SURVEY: INITIAL CONTROL PERFORMED MAY, 2000; TOPO SURVEY PERFORMED DEC., 2004 THRU MAR., 2005; CORNERS SET SOME DAY IN THE NEAR FUTURE, 2005.
HORIZONTAL DATUM: NAD 83/91 - WASHINGTON STATE GRID, NORTH ZONE, AS DERIVED BY GPS OBSERVATION.

LEGEND

- ◆ SET 5/8" X 24" REBAR & ALUMINUM CAP L.S. 15640
- FOUND REBAR LS 23599 / LS 15640
- SET ALUM. CAP MONUMENT IN CASE
- FOUND ALUM. CAP MONUMENT IN CASE
- UNMONUMENTED COURSE CHANGE
- FOUND BRASS CAP IN CONCRETE
- Ⓢ LOT ADDRESS

LINE NO.	BEARING	LINE
L-1	N64°00'00"E (R)	47.27'
L-2	S31°01'20"W	34.39'
L-3	S82°38'43"E	66.72'
L-4	S50°42'24"E	25.00'
L-5	S50°42'24"E	25.00'
L-6	N0°25'17"W	122.80'
L-7	N59°44'24"E	63.87'
L-8	N48°29'04"E	164.88'

CURVE NO.	RADIUS	LENGTH	DELTA ANG.	CHORD BRG.	DIST.
C-1	135.00'	117.42'	49°50'00"	S01°05'00"E	113.75'
C-2	200.00'	99.93'	17°10'06"	N15°14'57"E	99.70'
C-3	210.00'	162.58'	44°21'25"	S28°50'37"W	158.55'
C-4	500.00'	102.35'	11°43'43"	N45°09'28"E	102.17'
C-5	500.00'	72.18'	8°16'17"	N35°09'28"E	72.12'
C-6	500.00'	177.73'	20°21'58"	S41°12'18"W	176.79'
C-7	232.00'	153.55'	37°55'15"	S64°24'17"E	150.76'
C-8	220.00'	313.82'	81°43'44"	N85°06'44"W	287.88'
C-9	200.00'	125.58'	35°58'36"	N72°00'42"E	123.53'
C-10	500.00'	57.38'	6°34'29"	N47°44'05"E	57.34'
C-11	500.00'	44.98'	5°09'14"	N41°52'13"E	44.96'
C-12	500.00'	22.25'	2°33'00"	S37°17'50"W	22.25'
C-13	500.00'	155.47'	17°48'57"	S42°28'49"W	154.85'
C-14	25.00'	42.03'	96°19'58"	S79°11'19"W	37.25'
C-15	25.00'	40.22'	92°10'01"	S65°33'42"E	36.02'
C-16	25.00'	32.30'	74°01'39"	S88°24'07"W	30.10'
C-17	207.00'	70.51'	19°30'56"	S73°36'26"E	70.17'
C-18	25.00'	50.28'	115°14'15"	S06°13'50"E	42.23'
C-19	25.00'	36.56'	83°47'06"	S86°43'10"E	33.59'
C-20	45.00'	47.25'	60°09'41"	N29°39'33"E	45.11'
C-21	50.00'	9.82'	11°15'20"	N54°06'44"E	9.81'



Erlandsen & Associates, Inc.
Professional Land Surveyors
BREMSTER CHELAN
(509) 689-2529 (509) 682-4189
EAST WENATCHEE
(509) 884-2562

DRAWN BY: CRB CHECKED BY:
DATE: MAY 5, 2006 FILE NO.: 2003109MS_5.dwg
SCALE: 1" = 100' JOB NO.: 2003109.00